

Meter circuit breaker box



F732 (Single phase)

F733 (Three-phases)

Application

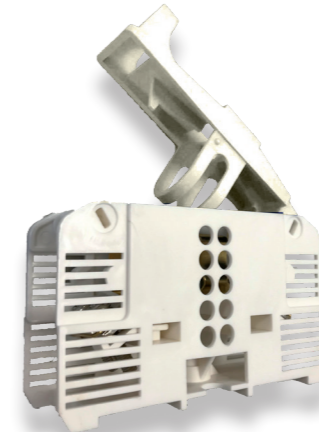
The customer box is designed to receive a meter and the needed protection equipment. It can be installed outside or inside the house.

Description

- The box is available in single-phase and three-phase.
- It can accommodate:
 - A 22x58mm circuit breaker (in option, supplied with F73X-M),
 - A support to receive a meter (supplied),
 - A support to receive an earth leakage circuit breaker (supplied).
- It has a window on the front part allowing the reading of the meter as well as an access hatch to the location of the differential circuit breaker.
- It has 2 entrances equipped with 2 cable grommets allowing watertight cable passage at the bottom of the cabinet.
- It is injected in fiberglass-reinforced synthetic materials offering good resistance to weather conditions (very good protection against UV, humidity and water penetration).
- It can be sealed with a seal or a padlock, thus limiting fraud and access to live parts (not supplied).
- It can be fixed with screws and plugs, or strap (not supplied).

Code	Designation	Weight (kg)	Sales unit
F732	METERING CUSTOMER BOX / SINGLE-PHASE CIRCUIT BREAKER	2.50	1
F733	METERING CUSTOMER BOX / THREE-PHASES CIRCUIT BREAKER	6.60	1

Accessories



U609

Application

The box is part of the control panel board. It is designed to fulfill the individual main branch circuit breaker. It is intended to receive a 22x58 fuse.

Description

- The terminals of this device can receive either copper or aluminum conductors, with a cross section of 6 to 35 mm².
- These products are designed to be used in enclosures placed either outside or inside the home.
- The wide open bases facilitate wiring and limit heating during operation.

Code	Designation	Weight (kg)	Sales unit
U609	UNIPOLAR CUTOUT 22x58	0.157	10